

We have organized green partnerships to continue to promote effective environmental conservation.

To promote effective environmental conservation, it is important to make an effort in reducing the environmental impact caused by “overall operations” through partnerships with suppliers and customers. For this purpose, it is necessary to establish, maintain, and improve partnerships that are beneficial to all parties. To contribute to the creation of a sustainable recycle-oriented society, we regard all parties involved in the operations of the Ricoh Group as green partners, and we, together with these green partners, are promoting effective environmental conservation.

Sustainable Environmental Management Network Expanded through Green Partnerships

<Rico Group (Global)>

Under the concept that environmental conservation cannot be achieved on a global scale by the efforts of only one company, the Ricoh Group continued to promote sustainable environmental management in cooperation with a variety of partners and made positive efforts to expand the network of activities in fiscal 2006.

● Customers

Promotes environmental conservation activities in cooperation with many customers through the Tree Dedication Programme in the U.K. [See page 11.](#)

● Suppliers

Supported and promoted CMS examiner training and CO₂ reduction efforts by suppliers. [See page 33.](#)

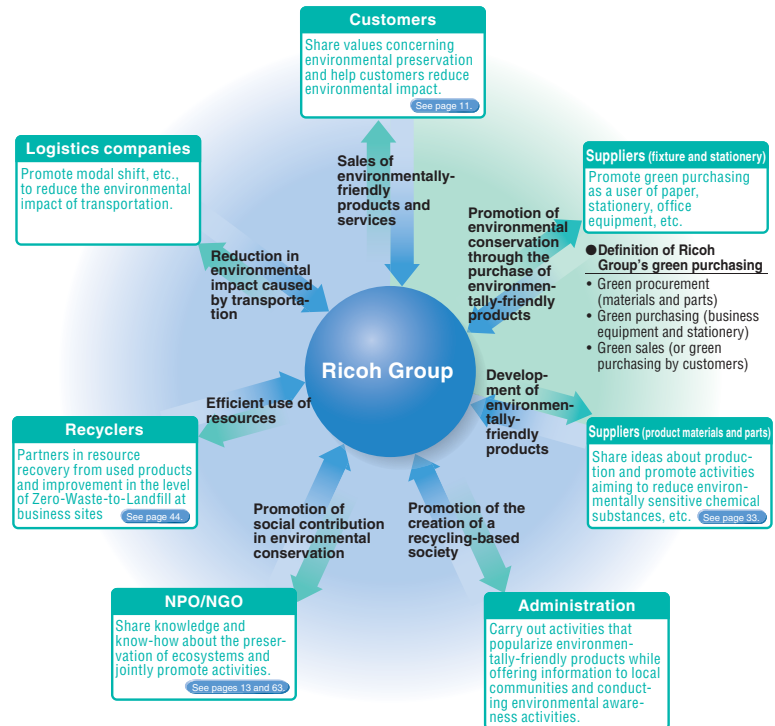
● NPO

Held events aimed at promoting conservation of the global environment through cooperation between different NPOs and between companies and NPOs. [See page 13.](#)

● Recyclers

Promotes activities aiming at reliable waste disposal. [See page 44.](#)

Ricoh Group's Green Partnerships



Green Partnership with Customers

<Rico Malaysia Sdn. Bhd. (Malaysia)>

Ricoh Malaysia Sdn. Bhd. (RMS), a sales subsidiary, supports its customers in the creation of environmental sections in their offices and in their environmental activities. There is a green balance section in the RMS office, where benches made from recycled toner cartridges are placed and the process of recycling is presented. Local plants are



Green balance section in the RMS office

also exhibited beautifully in the section. As a result of this exhibition, Shell Information Technology International Sdn Bhd (Shell IT) requested RMS to propose environmental conservation measures, and in response, RMS proposed the creation of a green balance section in Shell IT's office and the reduction of waste through 3R activities. The proposal was accepted. We will communicate more intensely with our customers from an environmental viewpoint and continue to engage ourselves in activities aiming to expand the environmental conservation network.