

### We need to reduce the environmental impact of society to a level that the Earth's self-recovery capability can deal with.

The purpose of environmental conservation activities is to reduce environmental impact to a level that Earth's self-recovery capability can deal with it and sustain the global environment. The Ricoh Group, by considering how the relationship among the three P's (planet, people, and profit) in environmental, social, and economic activities has changed over time, defines the kind of society we should pursue and carries out its responsibility as a company to create such a society.

#### Society and the Global Environment in the Past

In the past, the environmental impact caused by society was kept within the limit of the global environment's self-recovery capability. After the Industrial Revolution in the 18th century, however, the world entered an age of mass production, mass consumption, and mass disposal, which significantly increased environmental impact. At the end of the 20th century, some people began to warn against a deteriorating global environment and its impact on human society. Today, companies that are not seriously committed to environmental conservation cannot gain support from society.

#### Current Efforts by Society and Businesses

Today, people are paying more attention to activities that reduce damage to the global environment, including the sorting of waste, recycling, and prevention of global warming. Manufacturers face such challenges as promoting smaller products with longer lifecycles, energy conservation, and resource recycling, as well as providing the maximum benefit to society and companies with minimum resources. Global companies as well are expected to support and promote the awareness of environmental conservation in developing countries and regions so that they can achieve economic progress with minimum environmental impact. Another important issue is to increase the self-recovery capability of the natural environment by such efforts as improving forest ecosystem conservation.

#### To Achieve the Ideal Society

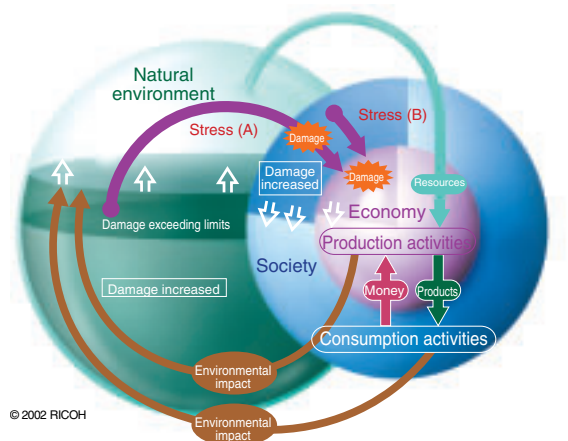
To keep environmental impact within the self-recovery capability of the natural environment, setting specific goals for the prevention of global warming, the conservation of resources, and the prevention of pollution is important. The Ricoh Group has adopted the Year 2010 Long-term Environmental Goals<sup>1</sup> and the Environmental Action Plan from 2005<sup>2</sup> as milestones on the path to attaining its long-term vision of the ideal sustainable society. To preserve the global environment for future generations, we need to take action with greater environmental awareness and clearer goals.

1. See Page 9.

2. See Page 11.

### Three P's Balance™: Representing the Relationship between the Global Environment and Society

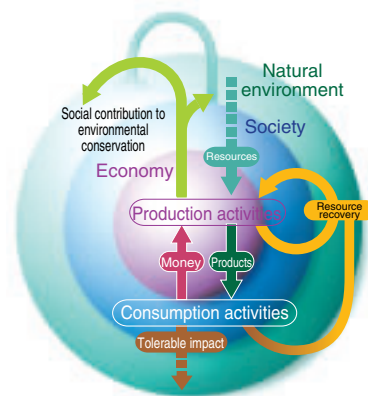
#### ■ Status quo



© 2002 RICOH

Our environmental impact on the Earth has exceeded the planet's life-sustaining abilities as well as its recovering ability.

#### ■ Pursuing the Ideal Society



Environmental impact remains within the recovering ability of the Earth.

For more information, please visit <http://www.ricoh.com/environment/management/earth.html>.