

Ricoh Group Sustainable Management Promotion System

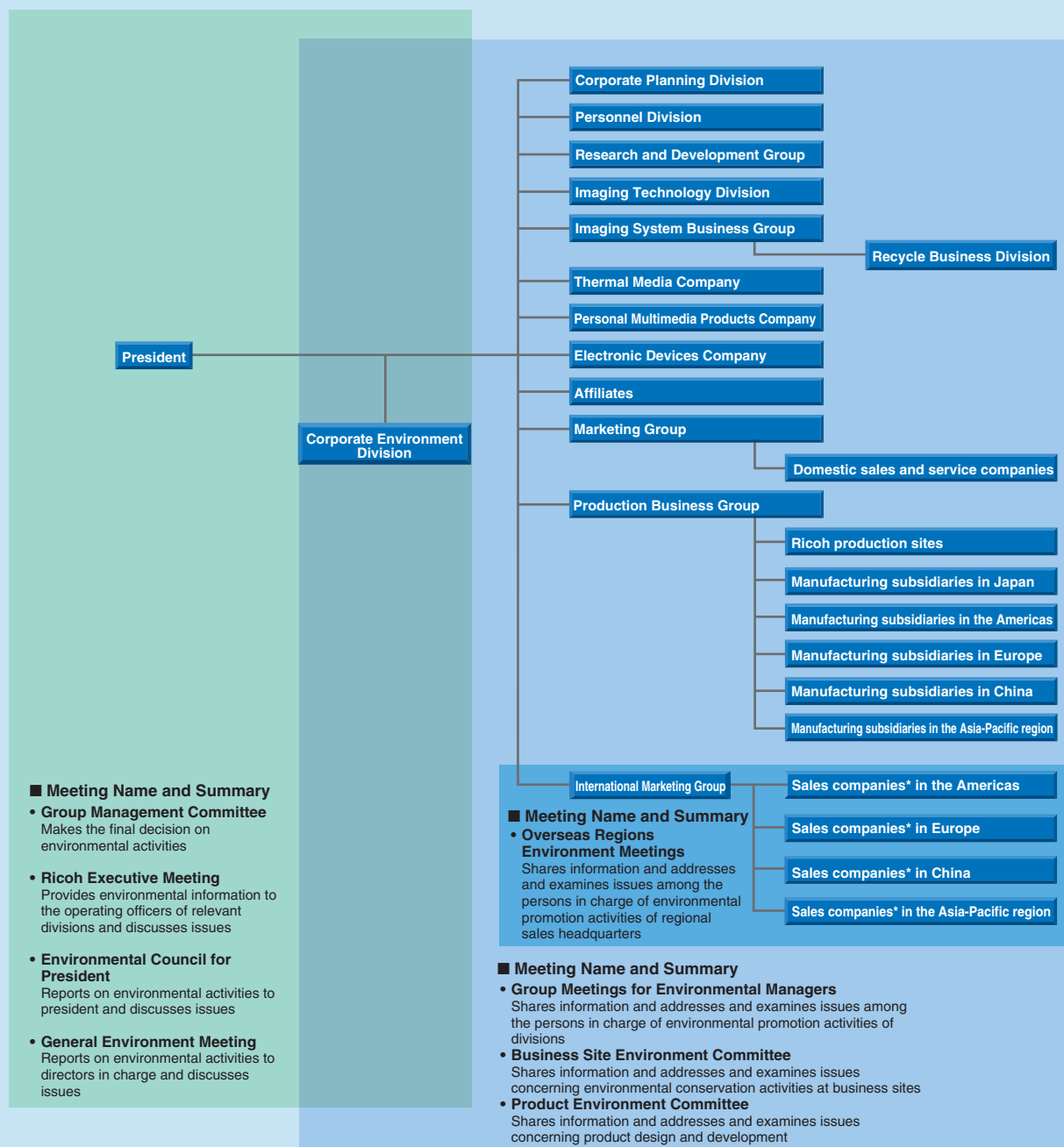
The Ricoh Group has integrated the management of environmental activities into the management of business.

The Ricoh Group integrated the management of environmental activities into business management on a global scale at an accelerated rate to achieve better sustainable management. Also,

in January 2003 we established the CSR Division* to gain even more trust from society at large.

* See page 1 for the purpose of establishing the Corporate Social Responsibility Office.

Organization Chart for the Ricoh Group's Sustainable Management System



* The United States, Canada, and Latin America are covered by sales companies in the Americas; Europe, the Middle East, and Africa are covered by sales companies in Europe; China is covered by sales companies in China; and Asia (excluding Japan and China but including Hong Kong and Taiwan) and Oceania are covered by sales companies in the Asia-Pacific region.