

---

## High Efficiency , Small Packages, Step-Up DC\_DC Converters

---

NO.EA-193-090420

### OUTLINE

RP400Xxx1C, RP400K001C are high efficiency, step-up DC-DC converter ICs packaged in compact 5pin SOT23 or 6pin DFN(PLP). This converter starts up of low voltage(typ.1.2V) operation from two alkaline or a single Li+ battery.

This IC consists of a reference voltage unit with soft start, error amplifier, PWM comparator, current limit circuit and internal switch and PWM/VFM mode control circuit. A low ripple high efficiency step up DC/DC converter can be composed of RP400xseries with only an inductor, a diode, divider resistors and a capacitor. This converter is based on a fixed frequency current mode PWM control which goes to power save mode(VFM mode) at light load automatically. RP400Xxx1C, RP400K001C has built-in Anti-ringing Switch to prevent switching node from ringing, when the converter enters the discontinuous current mode.

Output voltage of RP400K001C can be set within 1.8~5.0V (recommended range of output voltage) by external divider resistors.

### FEATURES

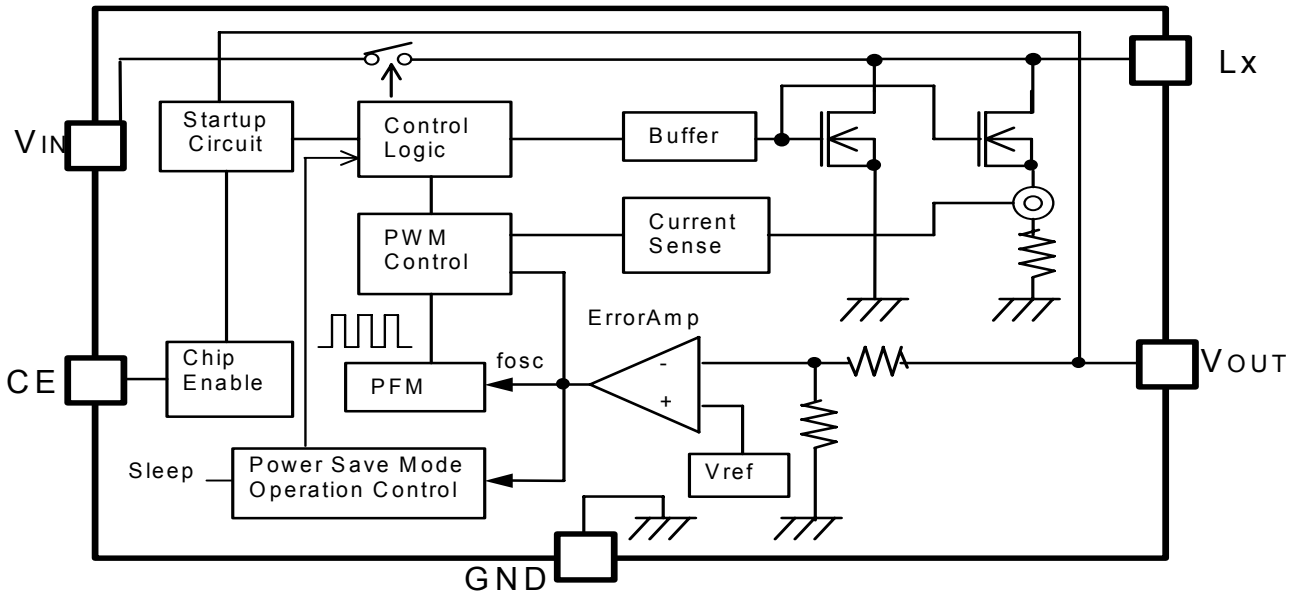
- Low Start-up Voltage guaranteed ..... 1.2V
- Input Voltage Range ..... 1.2V~5.5V
- High Efficiency ..... 85% (100mA/3.3V,  $V_{IN}=1.5V$ , 25°C)
- Output current ..... 200mA/3.3V( $V_{IN}=1.5V$ ) Typ. 100mA/2.0V( $V_{IN}=1.2V$ )
- Internal Switch ..... NMOS=0.4Ω ( $V_{OUT}=3.3V$ , 25°C)
- Built-in Frequency Compensation, Soft Start, Protection Circuit
- PWM Low Ripple Oscillator Frequency ..... 700kHz
- Output Voltage Range ..... Fixed: 1.8V to 5.0V with 0.1V Stepwise  
Adjustable: 1.8V~5.0V (RP400K001 only)  
(recommended range of output voltage)
  
- Stable with Ceramic Capacitors
- Small Package ..... DFN(PLP)1820-6, SOT23-5
- Internal EMI suppression (Anti-ringing switch is included)

### APPLICATIONS

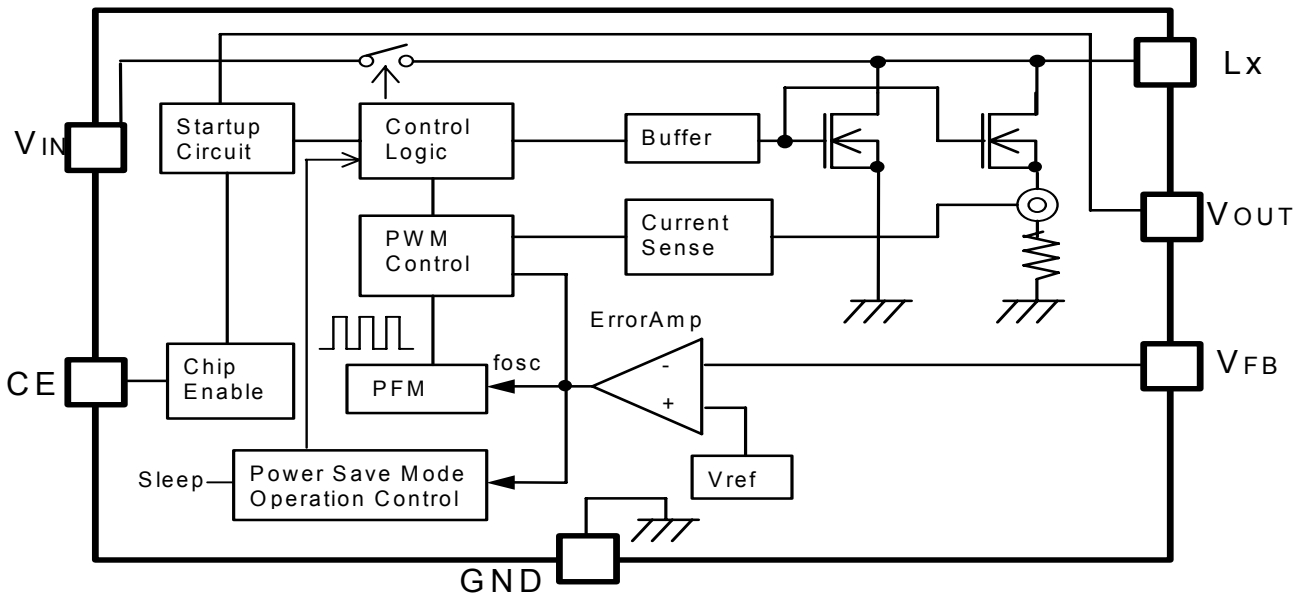
- MP3 players, PDA
- Digital Still Cameras
- LCD Bias Supplies
- Portable blood pressure meter
- Wireless Handset
- GPS

## BLOCK DIAGRAMS

### 1. Fixed Output with CE function RP400Xxx1C



### 2. Adjustable Output with CE function RP400K001C



## SELECTION GUIDE

In the RP400, Output Voltage, Type of Output Voltage, the Package, can be selected at the user's request. The selection can be made with designating the part number as shown below

**RP400**x xx**1**x-TR-F

↑    ↑    ↑    ↑    ↑

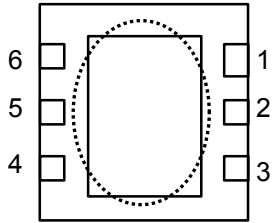
a    b    c    d    e

←Part Number

Part Number	Contents
a	Designation of the package K: DFN(PLP)1820-6 N: SOT23-5
b	Designation of output voltage 00: Adjustable version (1.8V~5.0V) * recommended range of output voltage *DFN(PLP)1820-6 only xx: Fixed version is possible in the range from 1.8V to 5.0V with a step of 0.1V
c	C: with CE pin
d	Designation of the taping type.(TR is standard)
e	F: Lead free plating (SOT-23-5,DFN(PLP)1820-6)

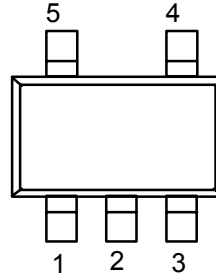
**PIN CONFIGURATION**

DFN(PLP)1820-6



(Bottom View)

SOT-23-5



(Top View)

**PIN DESCRIPTION**

- N: SOT-23-5      K: DFN(PLP)1820-6

【Version:C】

(GND=0V)

Pin No.			Symbol	Description
RP400Nxx1C	RP400Kxx1C	RP400K001C		
1	2	2	CE	Chip Enable Pin (Active with "H")
2	3	3	GND	Ground Pin
4	6	6	V <sub>OUT</sub>	Output Pin
5	4	4	LX	Internal NMOS Switch Drain Pin
3	1	1	V <sub>IN</sub>	Power Supply Pin
-	-	5	V <sub>FB</sub>	Feedback Input Pin for setting output voltage

Tab is GND level. (They are connected to the reverse side of this IC.)  
 Do not connect to other wires or land patterns.

**ABSOLUTE MAXIMAM RATINGS**

(GND=0V)

Symbol	Items	Ratings		Unit
V <sub>IN</sub>	V <sub>IN</sub> Supply Voltage	-0.3~6.0		V
V <sub>OUT</sub>	V <sub>OUT</sub> Pin Voltage	-0.3~6.0		V
V <sub>FB</sub>	V <sub>FB</sub> Pin Voltage	-0.3~6.0		V
V <sub>LX</sub>	Lx Pin Input Voltage	-0.3~6.0		V
V <sub>CE</sub>	CE Pin Voltage	-0.3~6.0		V
I <sub>Lx</sub>	Lx Pin Output Current	0.8		A
P <sub>D</sub>	Power Dissipation	SOT-23-5	420	mW
		DFN(PLP)1820-6	880	
T <sub>a</sub>	Operating Temp Range	-40~+85		°C
T <sub>stg</sub>	Storage Temp Range	-55~+125		°C

**ABSOLUTE MAXIMUM RATINGS**

Electronic and mechanical stress momentarily exceeded absolute maximum ratings may cause the permanent damages and may degrade the life time and safety for both device and system using the device in the field.  
 The functional operation at or over these absolute maximum ratings is not assured.

**Electrical Characteristics**

(Ta=25°C)

Description	Symbol	Conditions	MIN.	TYP.	MAX.	Unit
Input Voltage	V <sub>IN</sub>				5.5	V
Start-up Voltage 2	V <sub>start2</sub>	load current = 1mA V <sub>CE</sub> =1.5V		1.2	1.5	V
Start-up Voltage 3	V <sub>start3</sub>	load current = 1mA CE is connected to V <sub>OUT</sub>		1.2	1.5	V
Hold-on Voltage 1 (once started)	V <sub>hold1</sub>	load Current = 1mA	0.7			V
Quiescent Current 1 (Adjustable Version)	I <sub>DD1</sub>	V <sub>IN</sub> =3V, V <sub>OUT</sub> =5V, V <sub>FB</sub> =0V		500	800	μA
Quiescent Current 1 (Fixed Version)	I <sub>DD1</sub>	V <sub>IN</sub> = 0.5 × V <sub>OUT</sub> V <sub>OUT</sub> = 0.95 × V <sub>OUT</sub>		V <sub>OUT</sub> × 100	(*3)	μA
Quiescent Current 2 (No switching) (Adjustable Version)	I <sub>DD2</sub>	V <sub>IN</sub> =V <sub>OUT</sub> =5V, V <sub>FB</sub> =1.0V		160	300	μA
Quiescent Current 2 (No switching) (Fixed Version)	I <sub>DD2</sub>	V <sub>IN</sub> =V <sub>OUT</sub> =5V		160	300	μA
Standby Current	I <sub>stb</sub>	V <sub>IN</sub> =V <sub>OUT</sub> =5V, V <sub>CE</sub> =0V		0.15	3	μA
Feedback Voltage (Adjustable Version)	V <sub>FB</sub>	V <sub>IN</sub> =V <sub>OUT</sub> =3.3V,	0.588	0.600	0.612	V
Output-Voltage	V <sub>OUT</sub>	V <sub>IN</sub> = V <sub>CE</sub> =1.5v	× 0.98		× 1.02	V
Output-Voltage Temperature Coefficient	ΔV <sub>OUT</sub> /ΔT	-40°C≤Ta≤85°C		±100		ppm/°C
Switching Frequency	f <sub>osc</sub>	V <sub>IN</sub> =V <sub>OUT</sub> =3.3V	595	700	805	kHz
Switching Frequency Temperature Coefficient	Δf <sub>osc</sub> /ΔT	-40°C≤Ta≤85°C		±0.2		kHz/°C
NMOS On-Resistance(*1)	R <sub>ONN</sub>	V <sub>OUT</sub> =3.3V		0.4		Ω
CE "H" Input Current	I <sub>CEH</sub>	V <sub>IN</sub> =V <sub>OUT</sub> =V <sub>CE</sub> =5V			0.5	μA
CE "L" Input Current	I <sub>CEL</sub>	V <sub>IN</sub> =V <sub>OUT</sub> =5V, V <sub>CE</sub> =0V	-0.5			μA
FB "H" Input Current (Adjustable Version)	I <sub>FBH</sub>	V <sub>IN</sub> =V <sub>OUT</sub> =V <sub>FB</sub> =5V			0.5	μA
FB "L" Input Current (Adjustable Version)	I <sub>XFBL</sub>	V <sub>IN</sub> =V <sub>OUT</sub> =5V, V <sub>FB</sub> =0V	-0.5			μA
Lx leak Current	I <sub>Lx</sub>	V <sub>IN</sub> =V <sub>OUT</sub> =V <sub>Lx</sub> =5V, V <sub>CE</sub> =0V			5	μA
Lx peak Current limit (*2)	I <sub>Lxpeak</sub>	V <sub>OUT</sub> =3.3V Duty=MaxDuty-5%	0.4	0.6		A
CE input "H" level Voltage	V <sub>CEH</sub>	V <sub>IN</sub> =V <sub>OUT</sub> =3.3V	0.9			V
CE input "L" level Voltage	V <sub>CEL</sub>	V <sub>IN</sub> =V <sub>OUT</sub> =3.3V			0.4	V
Max Duty (Adjustable)	maxdty	V <sub>IN</sub> =V <sub>OUT</sub> =3.3V, V <sub>FB</sub> =0V	80	88	95	%
Max Duty (Fixed Version)	maxdty	V <sub>IN</sub> =V <sub>OUT</sub> =0.95XV <sub>OUT</sub>	80	88	95	%
Soft Start period	t <sub>start</sub>	V <sub>IN</sub> =V <sub>OUT</sub> X0.5,(MIN:1.2V) V <sub>CE</sub> =0V to 1.5V The time when becoming V <sub>OUT</sub> = V <sub>OUT</sub> × 0.9 is measured.	0.08	0.7	3.0	ms
Anti-ringing switch On Resistance	R <sub>ONA</sub>	V <sub>OUT</sub> =3.3V		110		Ω

\*1) Guaranteed by design engineering. NMOS On-Resistance according to the V<sub>OUT</sub> voltage.

\*2) Lx limit current changes by Duty.

\*3) The maximum value of Operating Current 1(Fixed Version) is shown on the table below.

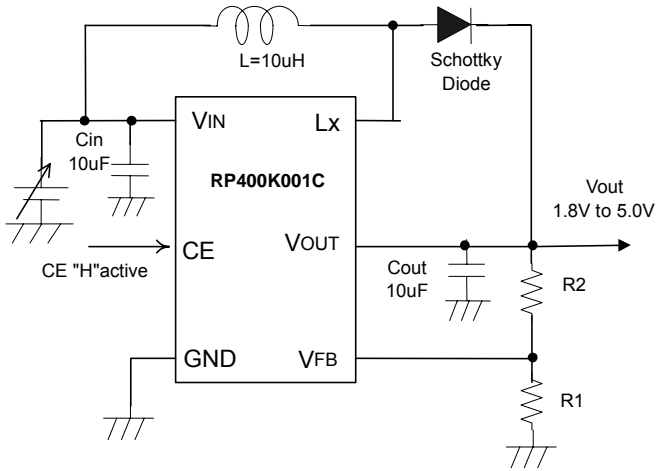
V <sub>OUT</sub> (V)	MAX (μA)
1.8 V	290
1.9 V	310
2.0 V	320
2.1 V	340
2.2 V	360
2.3 V	370
2.4 V	390
2.5 V	400
2.6 V	420
2.7 V	440
2.8 V	450
2.9 V	470
3.0 V	480
3.1 V	500
3.2 V	520
3.3 V	530
3.4 V	550
3.5 V	560
3.6 V	580
3.7 V	600
3.8 V	610
3.9 V	630
4.0 V	640
4.1 V	660
4.2 V	680
4.3 V	690
4.4 V	710
4.5 V	720
4.6 V	740
4.7 V	760
4.8 V	770
4.9 V	790
5.0 V	800

#### RECOMMENDED OPERATING CONDITIONS (ELECTRICAL CHARACTERISTICS)

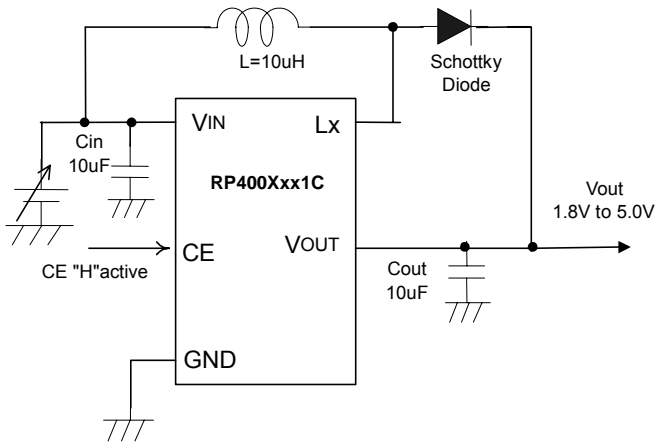
All of electronic equipment should be designed that the mounted semiconductor devices operate within the recommended operating conditions. The semiconductor devices cannot operate normally over the recommended operating conditions, even if when they are used over such conditions by momentary electronic noise or surge. And the semiconductor devices may receive serious damage when they continue to operate over the recommended operating conditions.

## APPLICATION NOTES

### Adjustable Output Voltage Type (Version:C)



### Fixed Output Voltage Type (Version:C)



### ● External components

- Capacitor : C2012JB1C106M (TDK)
- Diode : CRS02 (TOSHIBA)
- Inductor : SLF7045T-100M1R3-PF (TDK)

## ● Setting of output voltage

Output voltage(1.8V to 5.0V recommended range of voltage) can be set with divider resistors for voltage setting, R1 and R2 as shown in the typical application. Refer to the next formula.

$$\text{Output Voltage} = V_{FB} \times (R1+R2) / R1 \quad (V_{FB}=0.6V)$$

Recommended value of resistors(R1+R2) is lower than 100kΩ.

Make sufficient power supply and ground and reinforce supplying. The large switching current could flow through the connection of power supply, inductor, ground, diode and the connection of V<sub>OUT</sub>. If the impedance of the connection of power supply and ground is high, the voltage level of power supply of the IC fluctuates with the switching current. We recommend you to use output capacitor and diode with an allowable voltage at least 1.5 times as much as setting output voltage. This is because there may be case where a spike-shaped high voltage is generated by an inductor when built-in transistor is on and off.

Use a diode of a Schottky type with high switching speed, low reverse current and also pay attention to its current capacity.

Set external components as close as possible to the IC and minimize the connection between the components and the IC. In particular, output capacitor should be connected to V<sub>OUT</sub> pin with IC ground by the minimum connection, because this IC uses the V<sub>OUT</sub> voltage as the main power supply, after start-up. Use capacitors with a capacity of 10μF or more for V<sub>OUT</sub> pin. We recommend you to set a ceramic capacitor (10μF) between V<sub>IN</sub> and ground.

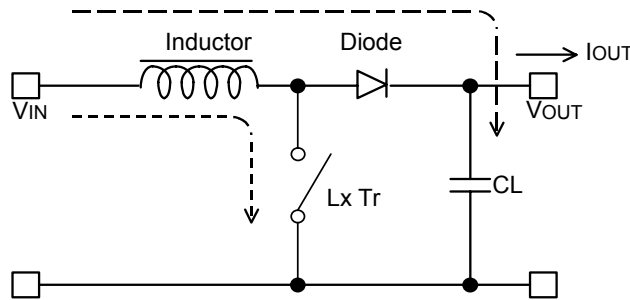
The divider resistors should be placed as close as possible to the IC ground pin. V<sub>FB</sub> line is recommended to use short line as well to avoid the influence of noise.

Please select the inductor value 10μH in the case of V<sub>OUT</sub> ≥ 2.5V and 6.8μH in the case of V<sub>OUT</sub> < 2.5V. Choose an inductor that has sufficiently small D.C. resistance and large allowable current and is hard to reach magnetic saturation. And if the value of inductance of an inductor is extremely small, the ILX may exceed the absolute maximum rating at the maximum loading. Use an inductor with appropriate inductance. (Refer to next Output Current of Step-up Circuit and External Components)

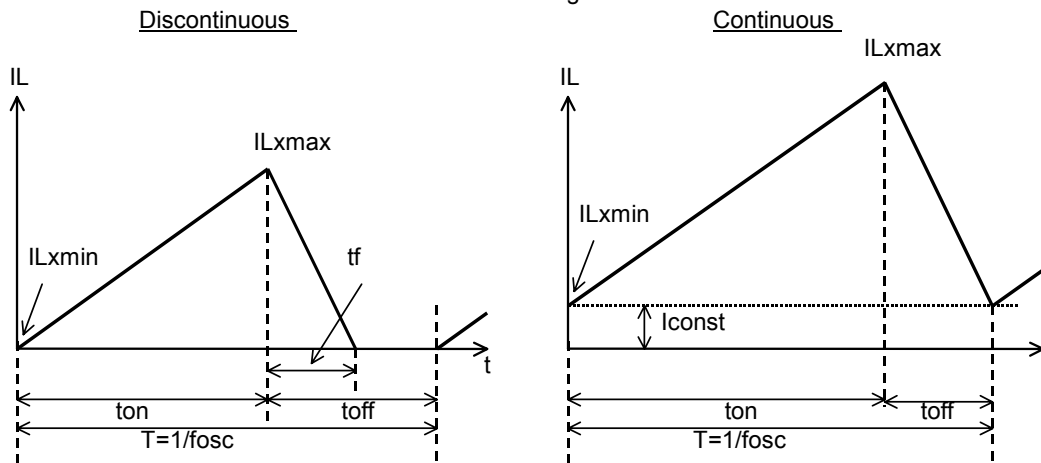
\*The performance of power circuit using those ICs extremely depends upon the peripheral circuits. Pay attention in the selection of the peripheral circuits. In particular, design the peripheral circuits in a way that the values such as voltage, current, and power of each component, PCB patterns and the IC do not exceed their respected rated values. (such as the voltage, current , and power)

## OUTPUT CURRENT OF STEP-UP CIRCUIT AND EXTERNAL COMPONENTS

<Basic Circuit>



<Current through L>



There are two modes, or discontinuous mode and continuous mode for the PWM step-up switching regulator depending on the continuous characteristic of inductor current. During on time of the transistor, when the voltage added on to the inductor is described as  $V_{IN}$ , the current is  $V_{IN} \times t/L$ . Therefore, the electric power,  $P_{ON}$ , which is supplied with input side, can be described as in next formula.

$$P_{ON} = \int_0^{ton} V_{IN}^2 \times t/L dt \dots\dots\dots \text{Formula 1}$$

With the step-up circuit, electric power is supplied from power source also during off time. In this case, input current is described as  $(V_{OUT} - V_{IN}) \times t/L$ , therefore electric power,  $P_{OFF}$  is described as in next formula.

$$P_{OFF} = \int_0^{toff} V_{IN} \times (V_{OUT} - V_{IN})t/L dt \dots\dots\dots \text{Formula 2}$$

In this formula,  $t_f$  means the time of which the energy saved in the inductance is being emitted. Thus average electric power,  $P_{AV}$  is described as in the next formula.

$$P_{AV} = 1/(ton + toff) \times \left\{ \int_0^{ton} V_{IN}^2 \times t/L dt + \int_0^{toff} V_{IN} \times (V_{OUT} - V_{IN})t/L dt \right\} \dots\dots\dots \text{Formula 3}$$

In PWM control, when  $t_f=t_{off}$  is true, the inductor current becomes continuous, then the operation of switching regulator becomes continuous mode. In the continuous mode, the deviation of the current is equal between on time and off time.

$$V_{IN} \times t_{on} / L = (V_{OUT} - V_{IN}) \times t_{off} / L \dots\dots\dots \text{Formula 4}$$

Further, the electric power, PAV is equal to output electric power,  $V_{OUT} \times I_{OUT}$ , thus,

$$I_{OUT} = f_{osc} \times V_{IN}^2 \times t_{on}^2 / \{2 \times L (V_{OUT} - V_{IN})\} = V_{IN}^2 \times t_{on} / (2 \times L \times V_{OUT}) \dots\dots\dots \text{Formula 5}$$

When  $I_{OUT}$  becomes more than  $V_{IN} \times t_{on} \times t_{off} / (2 \times L \times (t_{on} + t_{off}))$ , the current flows through the inductor, then the mode becomes continuous. The continuous current through the inductor is described as  $I_{const}$ , then,

$$I_{OUT} = f_{osc} \times V_{IN}^2 \times t_{on}^2 / (2 \times L \times (V_{OUT} - V_{IN})) + V_{IN} \times I_{const} / V_{OUT} \dots\dots\dots \text{Formula 6}$$

In this moment, the peak current,  $I_{Lxmax}$  flowing through the inductor and the driver Tr. is described as follows:

$$I_{Lxmax} = I_{const} + V_{IN} \times t_{on} / L \dots\dots\dots \text{Formula 7}$$

With the formula 4, 6 and  $I_{Lxmax}$  is

$$I_{Lxmax} = V_{OUT} / V_{IN} \times I_{OUT} + V_{IN} \times t_{on} / (2 \times L) \dots\dots\dots \text{Formula 8}$$

However,  $t_{on} = (1 - V_{IN} / V_{OUT}) / f_{osc}$

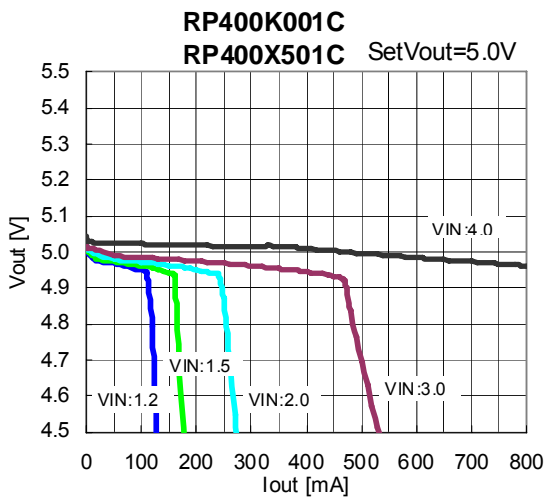
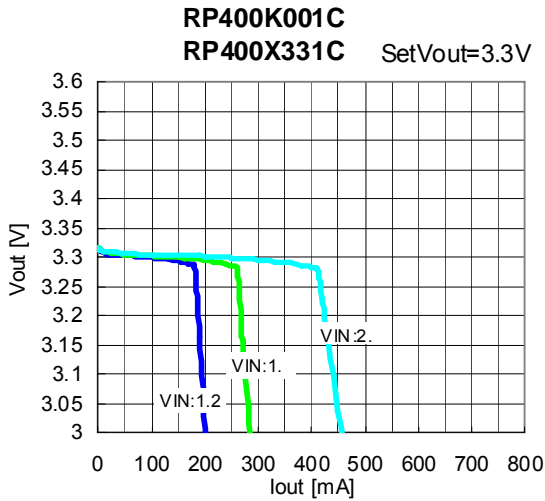
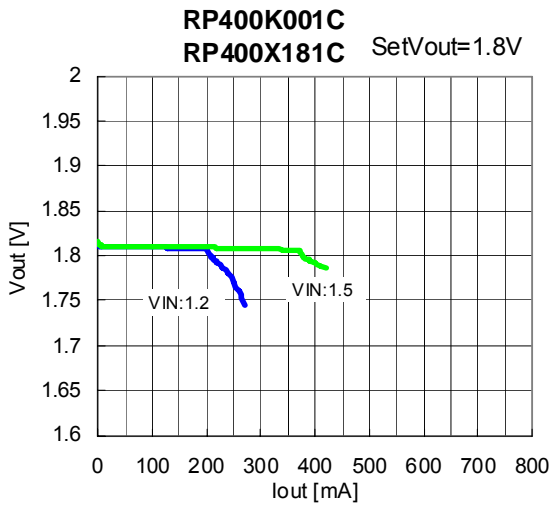
Therefore, peak current is more than  $I_{OUT}$ . Considering the value of  $I_{Lxmax}$ , the condition of input and output, and external components should be selected.

In the formula 7, peak current  $I_{Lxmax}$  at discontinuous mode can be calculated. Put  $I_{const}=0$  in the formula.

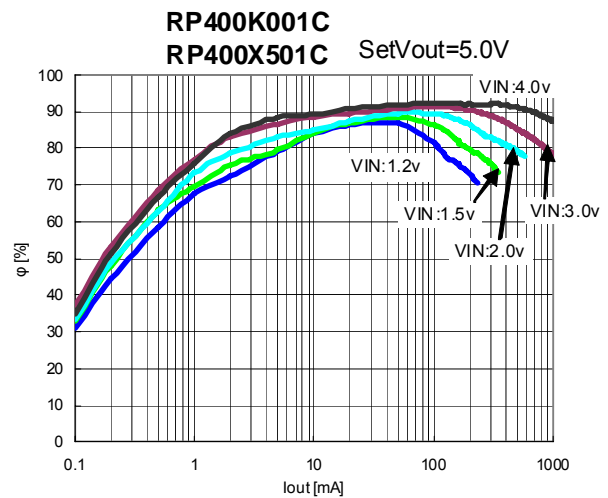
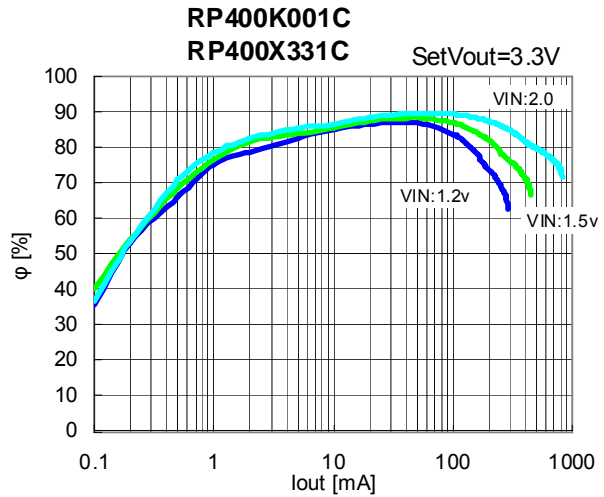
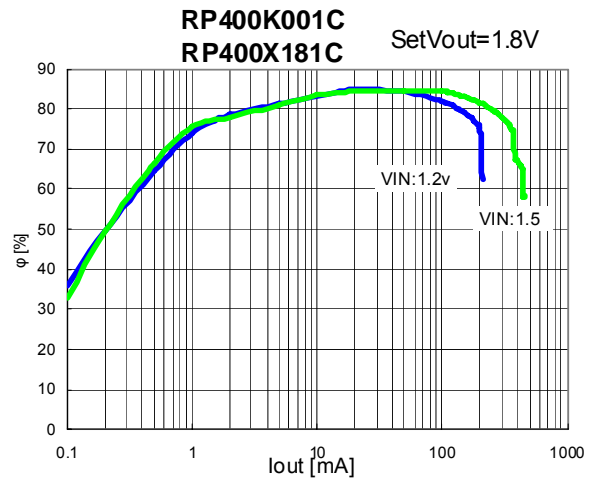
The explanation above is based on the ideal calculation, and the loss caused by Lx switch and external components is not included. Please select the inductor and the diode with current peak to the standard (Formula 8).

## TYPICAL CHARACTERISTICS

### 1) Output Voltage vs. Output Current

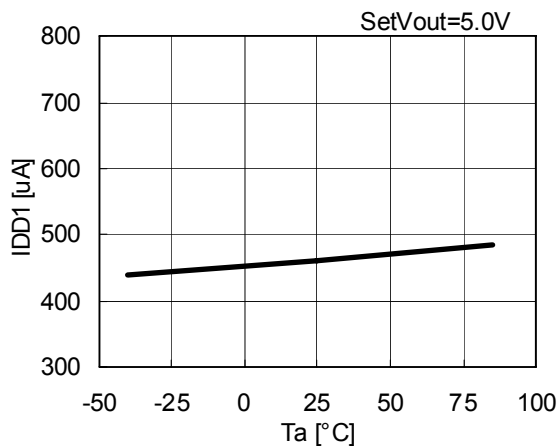


### 2) Efficiency vs. Output Current



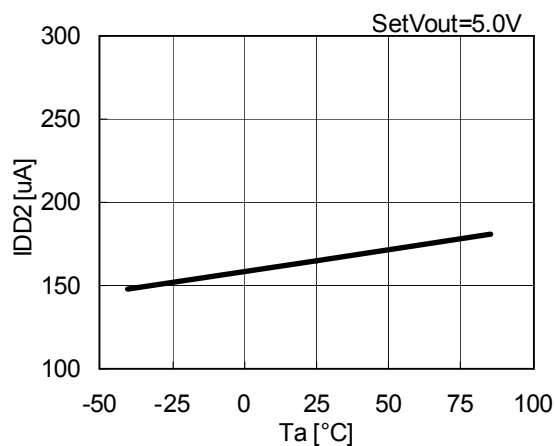
**3) Quiescent Current 1 vs. Temperature**

RP400K001C  
RP400X501C



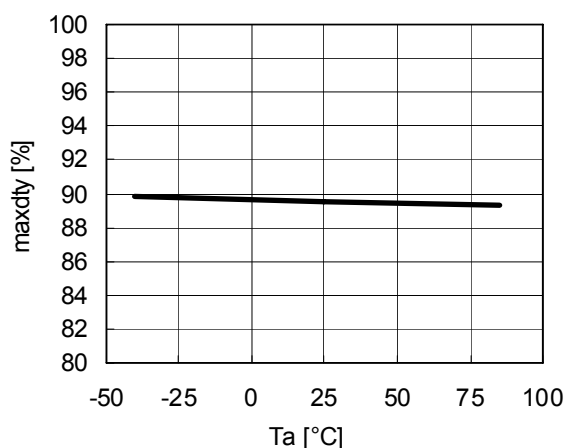
**4) Quiescent Current 2 vs. Temperature**

RP400K001C  
RP400X501C



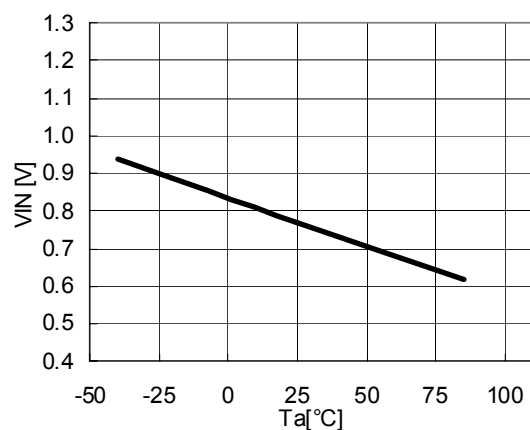
**5) Maxduty vs. Temperature**

RP400K001C  
RP400Xxx1C



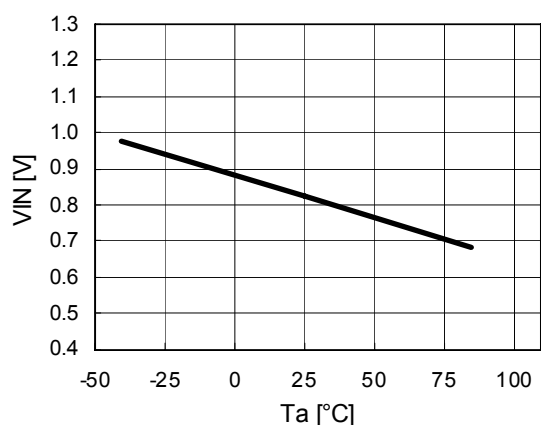
**6) Start-up Voltage 2 vs. Temperature**

RP400K001C  
RP400Xxx1C



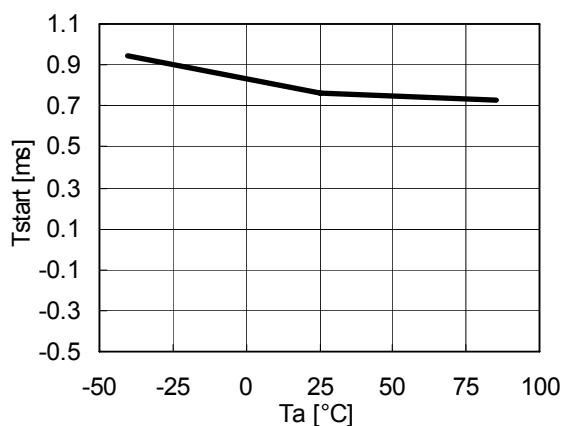
**7) Start-up Voltage 3 vs. Temperature**

RP400K001C  
RP400Xxx1C



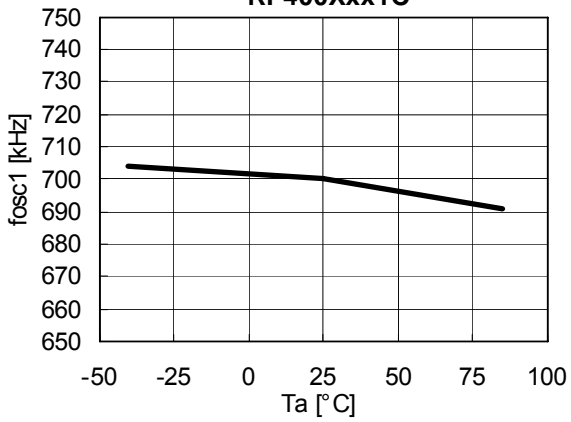
**8) Soft-Start Period vs. Temperature**

RP400K001C  
RP400X331C



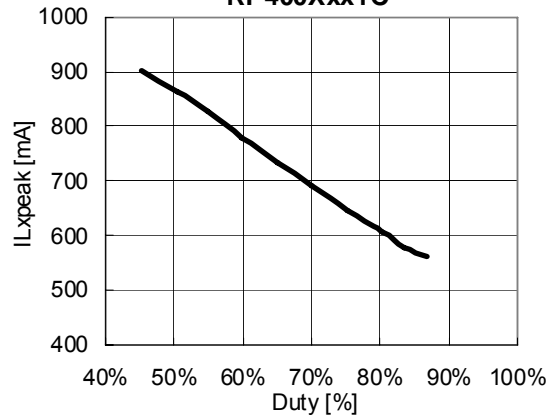
9) Switching Frequency vs. Temperature

RP400K001C  
RP400Xxx1C



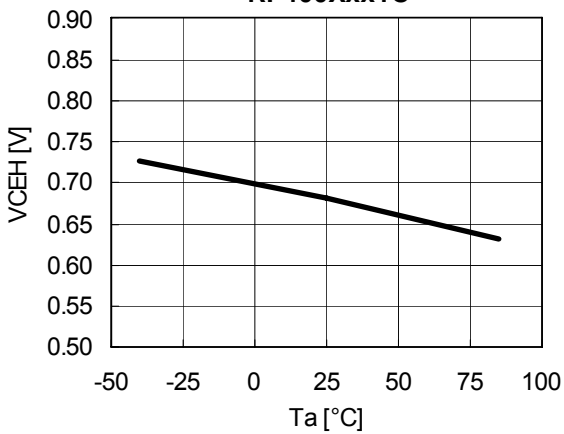
10) Lx Peak Current Limit vs. Duty

RP400K001C  
RP400Xxx1C



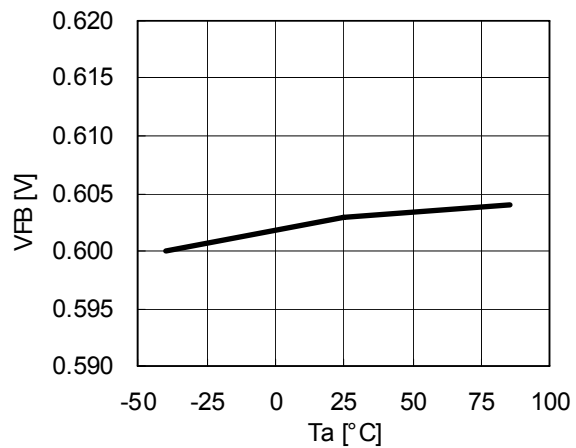
11) CE Input Voltage vs. Temperature

RP400K001C  
RP400Xxx1C



12) Feedback Voltage vs. Temperature

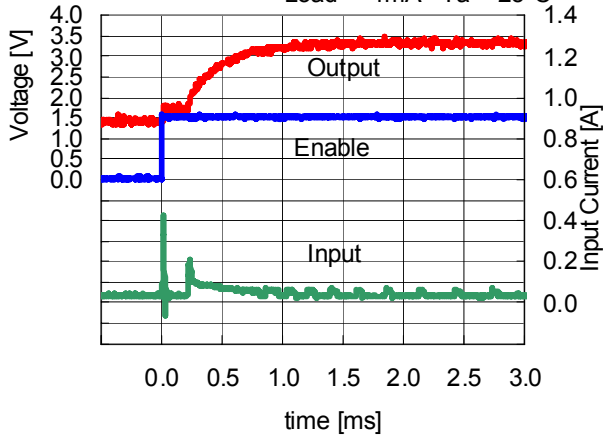
RP400X001C



13) Start-up Waveform

RP400K001C  
RP400X331C

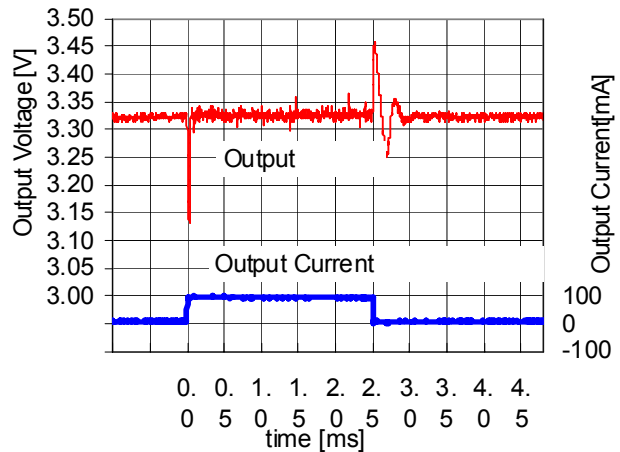
set-Vout = 3.3V VIN = 1.5V  
Load = 1mA Ta = 25°C



14) Load Response

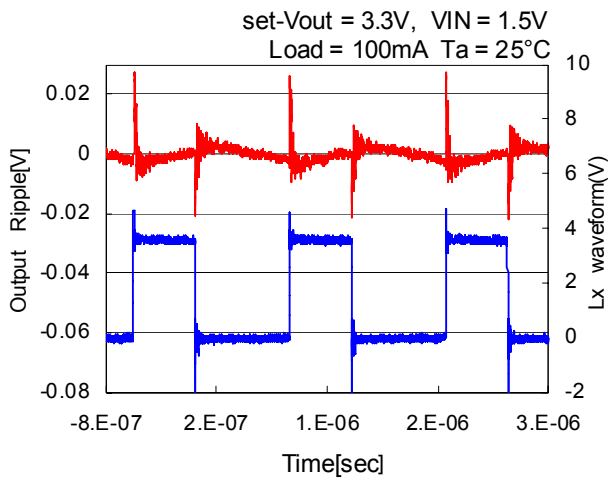
RP400K001C  
RP400X331C

Vout = 3.3V VIN = 1.5V Ta = 25°C

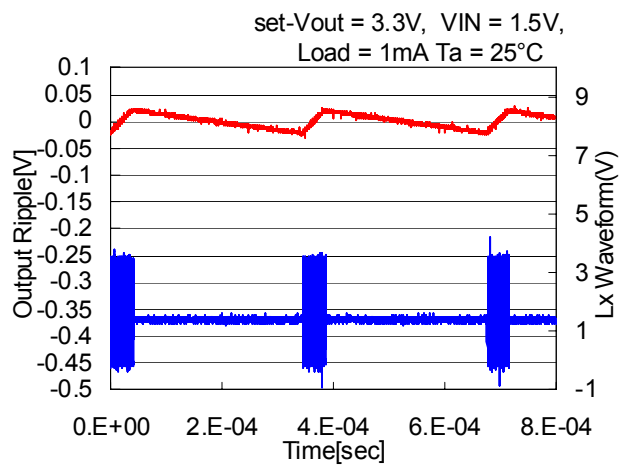


15) Output Voltage Waveform

RP400K001C  
RP400X331C



RP400K001C  
RP400X331C



16) Hold-on Voltage 1

RP400K001C  
RP400Xxx1C

